

# FirstBIKE

## ASSEMBLY INSTRUCTIONS



# INTRODUCTION

Thank you for purchasing a FirstBIKE balance bike; "The Safest Balance Bike on the Street!"

When properly assembled and maintained, FirstBIKE will allow your child to safely develop their balance while building confidence, gaining an appreciation for exercise and the outdoors, and experiencing a "First Sense" of fun and adventure!

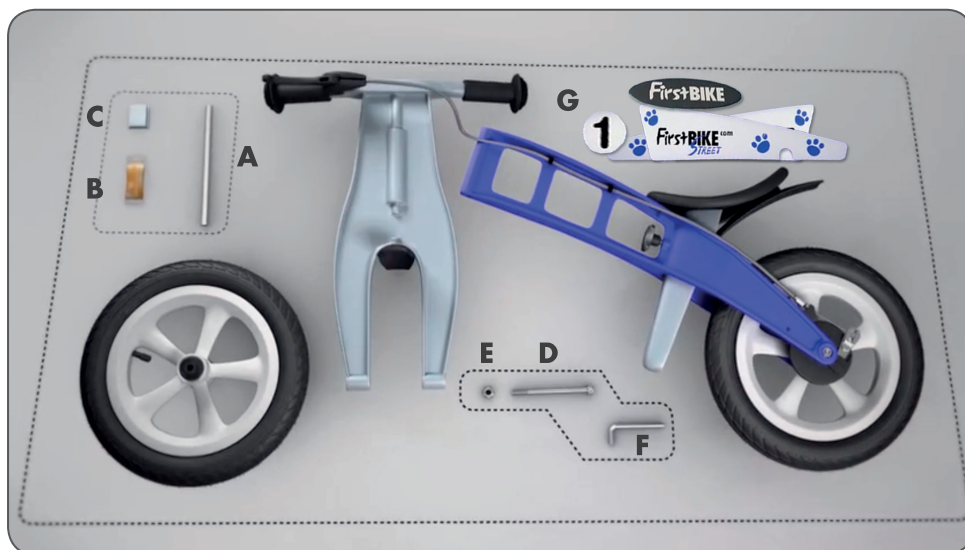
For visual assembly instructions, please refer to the "**How to assemble FirstBIKE**" video on the **SUPPORT** section of the FirstBIKE.com website located at:  
[www.firstbike.com/support](http://www.firstbike.com/support).



# FIRSTBIKE ASSEMBLY CONTENTS

**FOR FirstBIKE "BASIC," "STREET AND CROSS" MODELS**

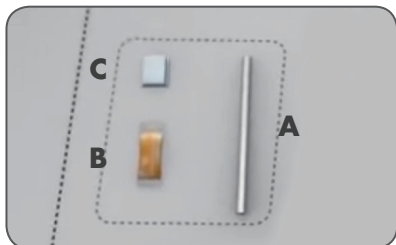
(FOR FirstBIKE "LIMITED EDITION" AND "RACING" MODELS SEE PAGE 7)



Part	Qty.	Description
A	1 pc.	Headset axle
B	1 pc.	Lubricant for headset axle
C	1 pc.	Plastic cover for headset
D	1 pc.	Wheel bolt (front) M 8 X 120 mm
E	1 pc.	Self-locking nut M 8
F	1 pc.	Hexagon ("Allen") wrench 6mm (for the wheel bolt)
G	2 pcs.	Adhesive (reflective) sticker sets

# ASSEMBLY INSTRUCTIONS

## FIRSTBIKE "BASIC," "STREET AND CROSS" MODELS



1. Open plastic bags containing headset axle (Part A), lubricant (Part B), and plastic cover (Part C).



2. Open the lubricant (Part B) and lubricate the headset axle (Part A) and contact surfaces of the front fork and frame using 2-3 drops for each surface.

3. Hold the front fork and frame together at the headset groove and insert the headset axle (Part A), **threaded side on top**, into the headset. To ensure the headset axle (Part A) is inserted completely, the wheel bolt (Part D) may be placed on top of the headset axle (Part A) and gently tapped into place with a rubber mallet to avoid damaging parts.



4. Insert the plastic cover (Part C) into the groove above the inserted headset axle (Part A) to close the hole. To ensure the plastic cover (Part C) is completely inserted, you may gently tap the plastic cover with a rubber mallet to avoid damaging parts.

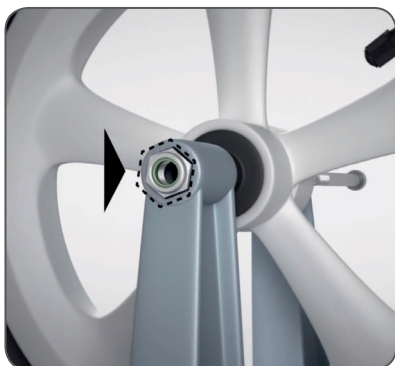


5. To fit the front wheel, turn the FirstBIKE upside down so that it rests on the seat and handlebar.

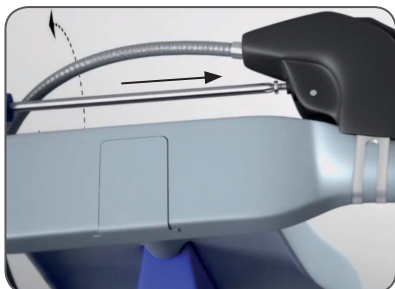




- 6.** Align the front tire between the front fork ensuring that the tire rotation direction matches the rear tire and directional arrow on the tire. The recommended / maximum tire inflation pressure is **2,5 bar**. DO NOT OVER-INFLATE!



- 7.** Insert the self-locking nut (Part E) into the hexagonal hole on the left side of the fork and insert and tighten the wheel bolt (Part D) from the right side using the hexagon ("Allen") wrench (Part F).



- 8.** For FirstBIKE models with brakes, the distance between the handlebar and the brake lever can be adjusted by tightening or loosening the brake lever screw.



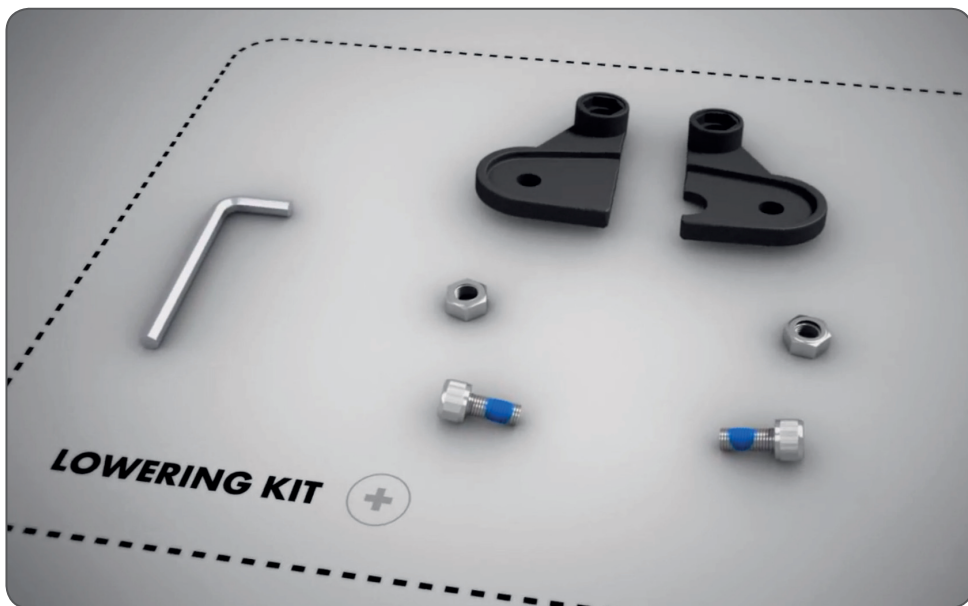
If necessary, adjust the brake cable tension with the adjustment screw located at the end of the brake cable by the rear wheel to ensure the brake does not rub or engage when the brake is not applied.



9. Apply adhesive stickers (Part G) according to the included Sticker Position photos. Note that the adhesive sticker for handlebar should be placed over the plastic cover (Part C).



10. If you purchased the optional "LowKit" Lowering Kit for FirstBIKE, please refer to the assembly instructions included with the "LowKit" to properly install.

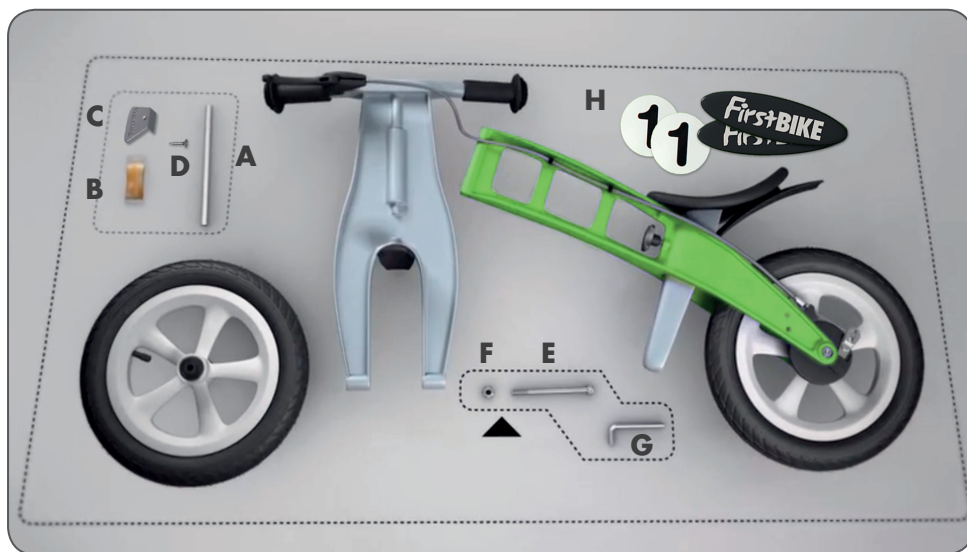


**NOTE:**

Please keep the tires inflated according to the recommended tire pressure indicated on the wheel rim. DO NOT OVER-INFLATE!

# FIRSTBIKE ASSEMBLY CONTENTS

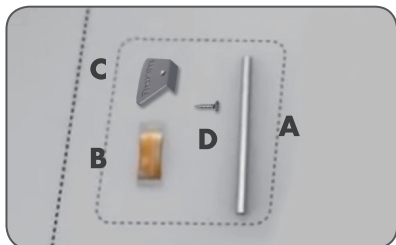
FOR FirstBIKE "LIMITED EDITION" AND "RACING" MODELS



Part	Qty.	Description
A	1 pc.	Headset axle
B	1 pc.	Lubricant for headset axle
C	1 pc.	Aluminum cover for headset
D	1 pc.	Screw for aluminum cover
E	1 pc.	Wheel bolt (front) M 8 X 120mm
F	1 pc.	Self-locking nut M 8
G	1 pc.	Hexagon ("Allen") wrench 6mm (for the wheel bolt)
H	2 pcs.	Adhesive reflective sticker sets

# ASSEMBLY INSTRUCTIONS

FirstBIKE "LIMITED EDITION" AND "RACING" MODELS



1. Open plastic bags containing headset axle (Part A) and lubricant (Part B) and bag containing the aluminum cover for headset (Part C), and screw for aluminum cover (Part D).



2. Open the lubricant (Part B) and lubricate the headset axle (Part A) and contact surfaces of the front fork and frame using 2-3 drops for each surface.



3. Hold the front fork and frame together at the headset groove and insert the headset axle (Part A), **threaded side on top**, into the headset. To ensure the headset axle (Part A) is inserted completely, the wheel bolt (Part E) may be placed on top of the headset axle (Part A) and gently tapped into place with a rubber mallet to avoid damaging parts.

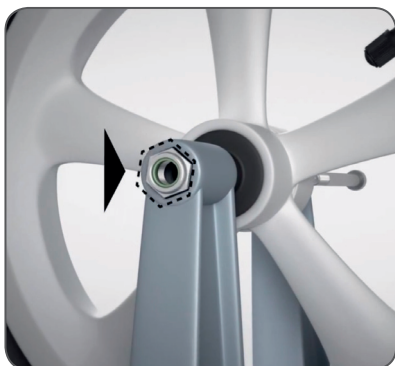


4. Attach the aluminum cover for headset (Part C) above the inserted headset axle (Part A) with the screw for aluminum cover (Part D) to close the hole.

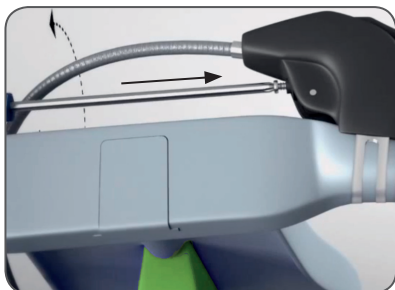
5. To fit the front wheel, turn the FirstBIKE upside down so that it rests on the seat and handlebar.



6. Align the front tire between the front fork ensuring that the tire rotation direction matches the rear tire and directional arrow on the tire. The recommended / maximum tire inflation pressure is **2,5 bar**. DO NOT OVER-INFLATE!



7. Insert the self-locking nut (Part F) into the hexagonal hole on the left side of the fork and insert and tighten the wheel bolt (Part E) from the right side using the hexagon ("Allen") wrench (Part G).



8. The distance between the handlebar and the brake lever can be adjusted by tightening or loosening the brake lever screw.



If necessary, adjust the brake cable tension with the adjustment screw located at the end of the brake cable by the rear wheel to ensure the brake does not rub or engage when the brake is not applied.

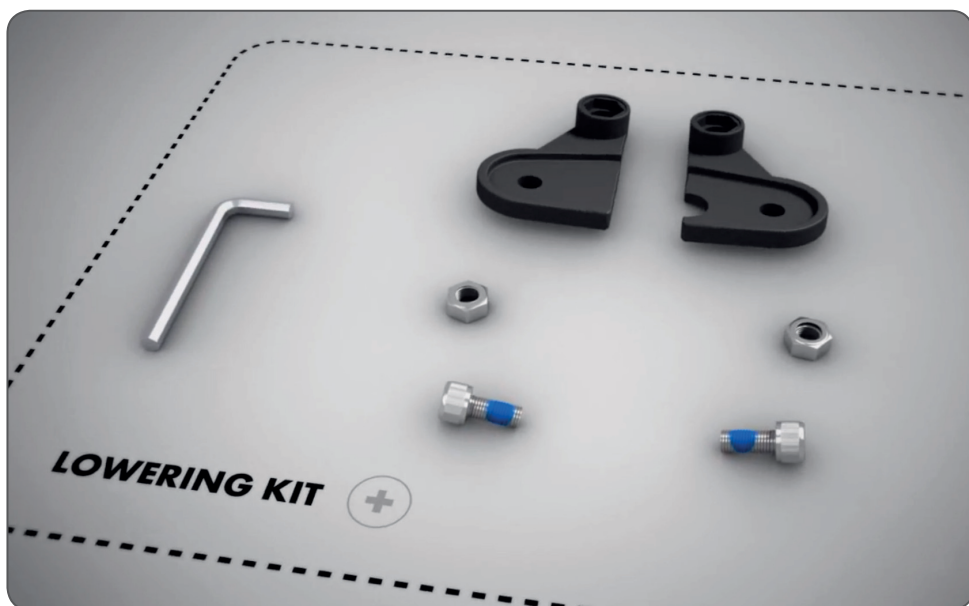




9. Apply adhesive stickers (Part H) according to the included Sticker Position photos.



10. If you purchased the optional "LowKit" Lowering Kit for FirstBIKE, please refer to the assembly instructions included with the "LowKit" to properly install.



**NOTE:**

Please keep the tires inflated according to the recommended tire pressure indicated on the wheel rim. DO NOT OVER-INFLATE!





# SAFETY WARNINGS AND PRECAUTIONS



## **YOUR CHILD SHOULD ALWAYS:**

**WEAR A HELMET, SAFETY VEST, AND APPROPRIATE FOOTWEAR  
AT ALL TIMES WHILE RIDING FirstBIKE**

**RIDE FirstBIKE WHILE SUPERVISED BY AN ADULT**

**RIDE FirstBIKE IN A SAFE ENVIRONMENT FREE FROM TRAFFIC  
AND DANGEROUS TERRAIN**

The following important safety instructions must be observed and followed when using FirstBIKE.

**Please read thoroughly before using FirstBIKE:**

FirstBIKE complies with the strictest toy testing standards of the EU and US, in that minimal risk is associated with the correct use of this toy.

Before a child uses FirstBIKE, always make sure that the bike is in fully functional riding condition and that no parts are damaged. Regularly check and tighten all nuts and bolts and make sure that tires are correctly

inflated. The valve caps on the wheels must be tightened securely with an appropriate tool. If small parts can be loosened from the bike, there is a danger of unscrewed parts being swallowed by small children.

If a defect is found, the bike must not be ridden until the defect has been properly repaired. Contact your local dealer or distributor immediately regarding any defects or damage.

The product must only be used by one child at a time. The maximum weight load is 35 kg/77 lb. The child must never use/ride FirstBIKE without adult supervision.

The FirstBIKE balance bike is designed for children from 22 months to 5 years old (note: the optional "LowKit" Lowering Kit is necessary for children from 22 to 30 months old). The height of the seat is easily adjustable, without tools, to the size of the little rider. The adjustment of the seat height is as follows:

**Without "LowKit" Lowering Kit:**

34.5 cm to 44.5 cm/13.5 in to 17.5 in

**With "LowKit" Lowering Kit:**

30.5 cm to 40.5 cm/12.0 in to 15.9 in

After each seat height adjustment, the "black star" knob used for fastening the seat post must be tightened securely so that the seat post cannot slip while in use. Use both hands if necessary. The seat height must always be adjusted precisely to the size of the rider: when the child is seated, both feet must be flat on the ground with knees slightly bent.

FirstBIKE is constructed with an "anti-jack-knife" "Steering Limiter," which prevents the handlebar from making a full turn (rotation). This safety feature reduces the possibility of falling, but cannot entirely prevent it. However, it must be noted that children's temperament and urge for physical activity may create unforeseen situations and riding behavior, for which the manufacturer cannot be held responsible.

Because the FirstBIKE frame is made of lightweight polyamide with 30% glass fiberglass, the bike is very light. Without the brake, it weighs only 3.5 kg/7.7 lb. and with the brake only 3.9 kg/8.6 lb.

The child must be able to control their speed at all times. In order to avoid accidents, prac-

tice braking with feet and teach the child how to safely handle the bike. For FirstBIKE models with rear-drum braking system, it is very important to practice braking with the child.

For FirstBIKE models with brakes, the "SafetyStop" rear wheel drum-brake system is suitable for use at approximately 2 1/2 years. Please note that your child, depending on their stage of development, will not be able to operate the brake effectively and consciously until approximately the age of 2 1/2 years. Mastering the use of the brake in any given hazardous situation is necessary for the brake to be efficient.

An adult should teach the child how to use the brake and monitor their progress until the child has acquired the appropriate braking skills. Different surfaces and traction, and varying hazardous situations require the controlled application of braking power. The early mastering of braking techniques will be a great advantage when progressing to a pedal cycle. The brake should be checked regularly and adjusted as necessary (see Assembly Instructions Step 8). Do not apply oil to the brake cable as it has a Teflon housing.

Avoid riding FirstBIKE near roads and other dangerous areas (e.g. swimming pools or open water, areas with stairs, etc.)! FirstBIKE must not be ridden on steep terrain or downward slopes. Ride only in sufficient daylight under the supervision of at least one adult.

While riding, the child must always wear a safety helmet, safety vest, and appropriate footwear.

# MAINTENANCE

Although FirstBIKE will not require much maintenance under normal circumstances, it is important to check all parts regularly. After extensive outdoor use, special attention should be paid to cleaning the following parts:

Contact area between frame and seat post  
Contact area between frame and front fork

FirstBIKE can be cleaned with an ordinary water-soluble detergent. Never use any kind of solvent or aggressive cleaning product.

The tire pressure must also be checked regularly. See wheel rim for maximum tire inflation pressure. **The maximum is 2,5 bar.** DO NOT OVER-INFLATE!

# QUESTIONS?

FirstBIKE comes with a lifetime warranty on the frame and fork and a 5-year warranty on all other parts.

## REGISTER FOR WARRANTY HERE:

**[HTTP://WWW.FIRSTBIKE.COM/SUPPORT/](http://www.firstbike.com/support/)**

If you have any questions regarding the proper assembly of FirstBIKE balance bikes or the FirstBIKE "LowKit" Lowering Kit, please contact your local distributor or e-mail us at: **[info@firstbike.com](mailto:info@firstbike.com)**.

Our international distributors can be found on internet: **[www.firstbike.com](http://www.firstbike.com)**

# LIMITED WARRANTY ON FirstBIKE BALANCE BIKE

## What it covers?

The frame and the fork of the FirstBIKE are covered by a “lifetime” limited warranty for the period of ninety-nine (99) years. Parts other than the frame and fork (including, but not limited to brake calipers, grips, seat, etc.) are covered by a 5-year limited warranty.

## What is NOT covered?

This limited warranty does NOT cover any damage due to misuse, normal wear or tear, or damages caused by use inconsistent with the assembly and use instructions or with generally accepted safe riding practices. This warranty does not cover any FirstBIKEs that have been modified or repaired by a non-authorized person or dealer. This warranty does not cover parts that were damaged in shipping or transit. This warranty does not extend to, or otherwise include, consequential or incidental damages resulting from product use or from breach of warranty.

## Who is covered?

This limited warranty extends only to the original purchaser of the FirstBIKE. FirstBIKE may require documentation (receipt or proof of purchase) to confirm the purchaser prior to authorizing repairs or replacement under this warranty. This warranty is not transferrable and you should register your FirstBIKE purchase on the FirstBIKE support page located here: <http://www.firstbike.com/support/>

## How long is the coverage?

The frame and fork of the FirstBIKE are covered by this limited warranty for a “lifetime” period of ninety-nine (99) years from the date of original purchase. All other parts are covered by this limited warranty for a period of five (5) years from the date of original purchase. This warranty applies only to the original purchaser and is not transferrable.

## What FirstBIKE will do?

FirstBIKE will repair or replace, in its sole discretion and at its option, and at no charge to the original purchaser, any parts covered by this warranty. For the frame and fork, FirstBIKE will repair or replace defective parts and will provide the labor for such replacement or repair; all other parts replaced under this warranty will be shipped to the consumer, who will be responsible for installation.

## How to obtain service?

If you believe you need to file a warranty claim, please contact us at the information below to obtain a return authorization. Please have your receipt or proof of purchase and the FirstBIKE itself handy when you call. FirstBIKE will then issue you a return authorization with specific instructions as to proceeding with a warranty claim.

## How state law applies?

This warranty gives you specific legal rights, and you may also have other rights which vary from state to state. Some states do not allow for certain exclusions, so consult with your state attorney general, with local legal counsel, or with your local distributor to be sure of your rights.

**PLEASE RETAIN THIS WARRANTY PAPERWORK AND ORIGINAL SALES RECEIPT  
FOR EASY FUTURE REFERENCE AND DOCUMENTATION.**

## **CUSTOMER SERVICE FOR USA AND CANADA:**

**The FirstBIKE Company, Inc.**

Toll Free: 1-855-MY-1-BIKE (Monday through Friday 8:30 am to 5 pm EST)

**info@firstbike.us | www.firstbike.us**

## **CUSTOMER SERVICE FOR OTHER COUNTRIES:**

Please contact your local distributor – our international distributors can be found on  
**www.firstbike.com**

If your country is not yet listed, please contact us directly at  
**info@firstbike.com**



# **FirstBIKE**

---

FirstBIKE Worldwide B.V. | Dokweg 27/B, IJmuiden | Postbus 391 | 1970 AJ IJmuiden | The Netherlands  
[www.firstbike.com](http://www.firstbike.com) | [info@firstbike.com](mailto:info@firstbike.com)